

# Texas Senate Select Committee on Redistricting

Clare Dyer  
Section Manager, Mapping and Redistricting  
Research Division  
Texas Legislative Council

September 1, 2010

# Presentation

Preparations for Redistricting  
Timeline  
Information

- Texas Redistricting website
- Publications
- Training

Applications

- DistrictViewer
- RedAppl

Reports, Maps, and Data

# Preparations for 2011 Redistricting

- ⦿ Database building: precinct boundaries and election returns by precinct
- ⦿ Website and publications
- ⦿ Internet district viewing application and TLC district modeling application (RedAppl)
- ⦿ Training (Redistricting 101, RedAppl class)
- ⦿ Legal support
- ⦿ Support for outreach hearings
- ⦿ Reports and maps

# Timeline

- April 1, 2010** Census Day
- Summer-Fall 2010** Regional outreach hearings in selected cities
- Dec. 31, 2010** Deadline for delivery of state total population data
- January 11, 2011** 82nd Legislature convenes
- February 15, 2011** Earliest likely delivery of census population data
- April 1, 2011** Deadline for delivery of census population data
- May 12, 2011** Last day to pass house bills under current rules (rules may change)
- May 30, 2011** 82nd Legislature adjourns; deadline for enactment of state senate or house plan
- May 31-Aug. 27, 2011** Legislative Redistricting Board convenes if legislature fails to adopt a senate or house plan
- Summer/Fall 2011** Special session on Congressional and SBOE plans could be called, if necessary
- October 26, 2011** Last day LRB may adopt a plan
- Fall 2011** All plans drawn by the legislature, the LRB, or a state district court must obtain preclearance under Section 5 of the Voting Rights Act
- June-Dec. 2011** Possible court challenges to redistricting plans
- January 2, 2012** Filing deadline for 2012 elections

# After the Session

After the legislative session is completed, the council provides support for:

- ⦿ the Legislative Redistricting Board, if convened
- ⦿ any state and federal court lawsuits on the plans
- ⦿ any special sessions called for congressional or SBOE redistricting

TLC also provides the maps, reports, and data to the Secretary of State for the preclearance submissions and, once the plans are finalized, notifies the county elections officials of their new districts and the location of district boundaries that split counties.

# TLC Redistricting Website

- announcements, news
- publications
- links to current districts, maps, and reports
- overviews of legal requirements and redistricting process
- redistricting history with summaries and chronology of 80s, 90s, and 2000s cycles with links to historical district maps
- timeline for current cycle

# TLC Redistricting Website



## TEXAS REDISTRICTING

[Glossary](#) | [FAQs](#) | [Site Index](#) | [Contact](#)

[Home](#) | [Current Districts](#) | [Legal Requirements](#) | [Redistricting Process](#) | [Redistricting History](#) | [Current Cycle](#)

### Legislative Resources

Senate Committee on Redistricting  
House Committee on Redistricting

### Redistricting Materials

Maps  
Reports  
Data  
Publications  
Cost and Request Information

### Applications & Tools

DistrictViewer  
Who Represents Me?  
Redistricting FTP Server

### Web Resources

Texas State Data Center  
U.S. Census Bureau

- Census 2010
- American FactFinder

Texas Secretary of State: Elections  
U.S. Dept. of Justice: Voting Section  
NCSL: Redistricting



### ANNOUNCEMENTS

★ The Senate Select Committee on Redistricting will hold a [public hearing](#) on **Wednesday, September 1st**, in Austin. Invited testimony only.

★ The Senate Select Committee on Redistricting will hold a [joint public hearing](#) with the Subcommittees on Dallas Redistricting of the House Committee on Redistricting and the House Committee on Judiciary and Civil Jurisprudence at 12:00 noon on **Monday, September 20th**, in Dallas.

★ The House Committee on Redistricting and the House Committee on Judiciary and Civil Jurisprudence, Subcommittees of Tarrant County Redistricting, will hold a [joint public hearing](#) at 10:00 a.m. on **Tuesday, September 21st**, in Arlington.

★ The House Committee on Redistricting and the House Committee on Judiciary and Civil Jurisprudence, Subcommittees of Richardson/UT-Dallas Redistricting, will hold a [joint public hearing](#) at 10:00 a.m. on **Wednesday, September 22nd**, in Richardson.

★ The National Conference of State Legislatures will hold a [National Redistricting Seminar](#) on **September 25-28** in Providence, Rhode Island.

### News

**July 2010** - For the 2011 redistricting cycle, the plans used to elect officeholders in 2010 are designated as PLAN S100 (senate), PLAN H100 (house), PLAN C100 (congressional), and PLAN E100 (State Board of Education). Subsequent plans that are made public in each category will be numbered sequentially beginning with 101.

**June 2, 2010** - The House Committee on Redistricting and the House Committee on Judiciary and Civil Jurisprudence met jointly to consider recent legal, technological, and demographic developments, including a [presentation](#) from the Office of the State Demographer, relating to upcoming redistricting.

**Feb. 10, 2010** - The House Committee on Redistricting met to consider matters relating to the upcoming 2010 Census, [more...](#)

**Jan. 21, 2010** - The House Research Organization published a new Focus Report, [Census 2010: Implications for Texas](#).

[News archive](#)

[Home](#) | [Current Districts](#) | [Legal Requirements](#) | [Redistricting Process](#) | [Redistricting History](#) | [Current Cycle](#)

# Publications

Recently published:

- Texas Population Change since 2000 for Redistricting
- Guide to 2011 Redistricting

Will be published late 2010:

- State and Federal Law Governing Redistricting in Texas
- Data for 2011 Redistricting in Texas



# Applications- DistrictViewer

## DistrictViewer

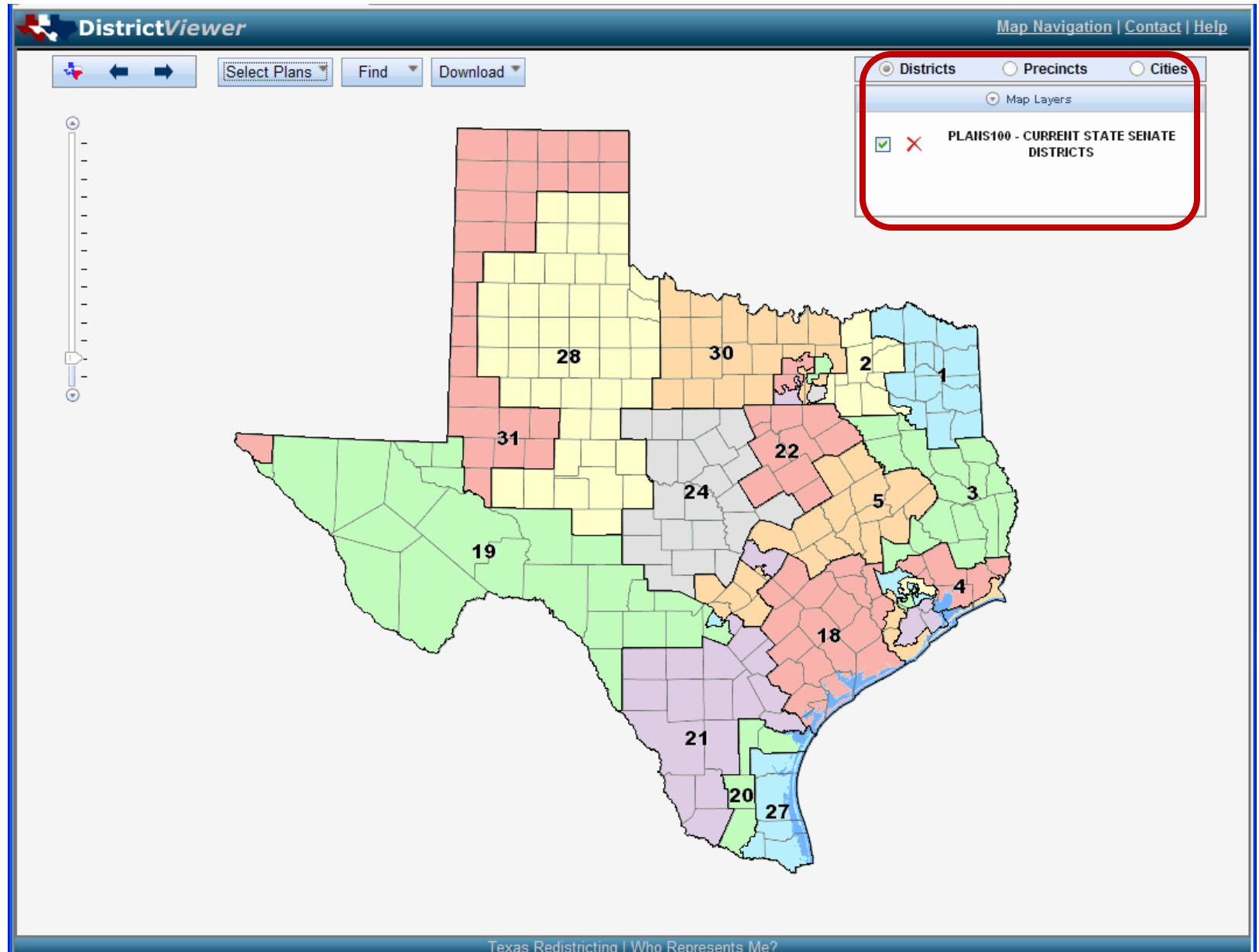
- Interactive Internet plan viewing application
- displays all public redistricting proposals
- can overlay and compare two plans
- can zoom to the street level
- can overlay precincts or cities
- can print maps and reports and download geographic data
- can find and zoom to an address
- available 24/7 to everyone

# DistrictViewer

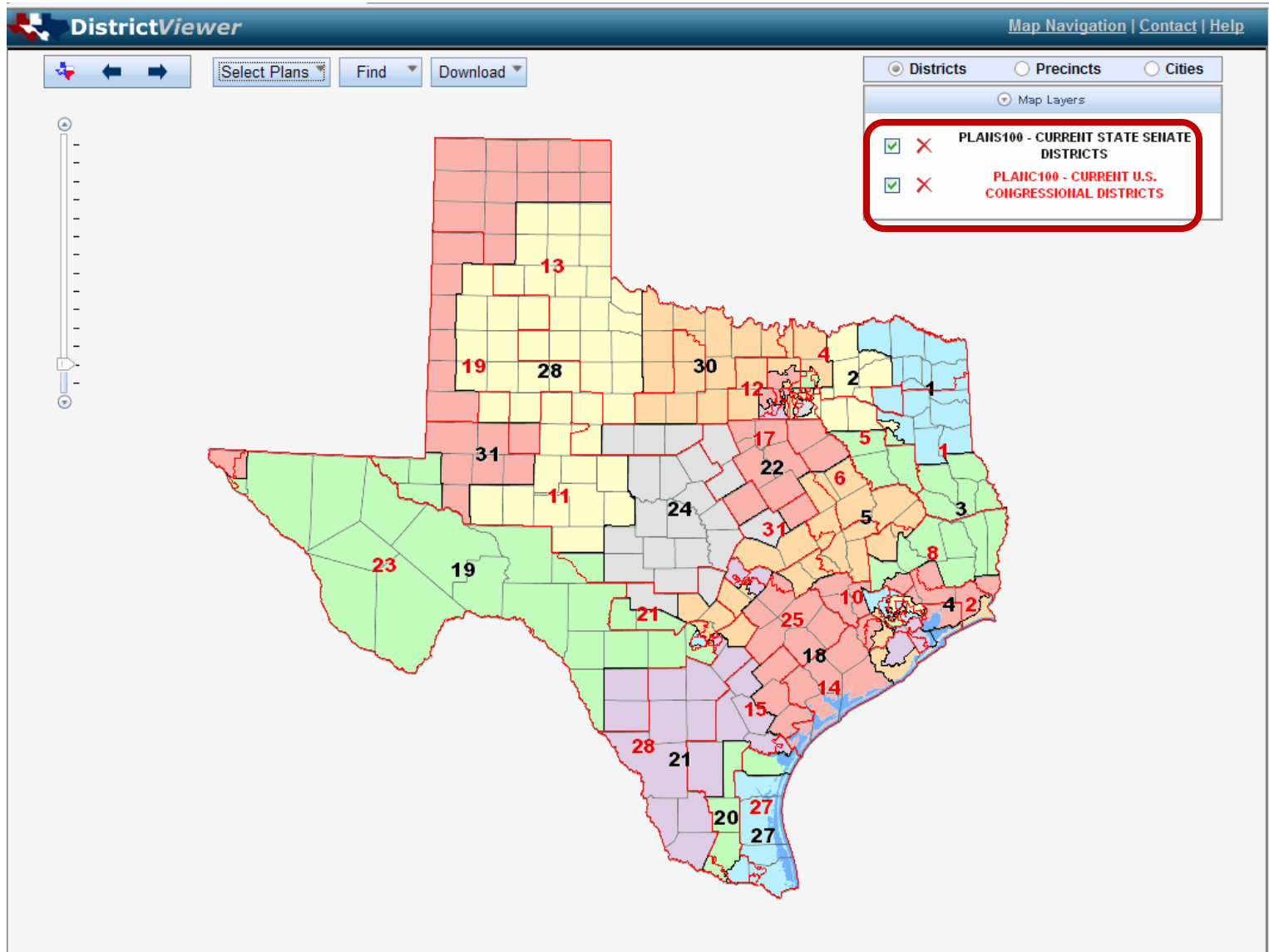
## Select base plan

The screenshot displays the DistrictViewer web application interface. At the top, there is a dark blue header with the text "DistrictViewer" on the left and "Map Navigation | Contact | Help" on the right. Below the header, there is a navigation bar with several elements: a small map icon, left and right arrow buttons, a "Select Plans" dropdown menu (highlighted with a red box), a "Find" dropdown menu, and a "Download" dropdown menu. To the right of these are three radio buttons labeled "Districts", "Precincts", and "Cities", with "Districts" selected. Below these is a "Map Layers" button. On the left side of the main map area, there is a vertical zoom slider. The main map area shows a map of Texas with a grid of districts. A blue shaded area is visible in the southeastern part of the state, representing a selected district or plan. At the bottom of the page, there is a dark blue footer with the text "Texas Redistricting | Who Represents Me?"

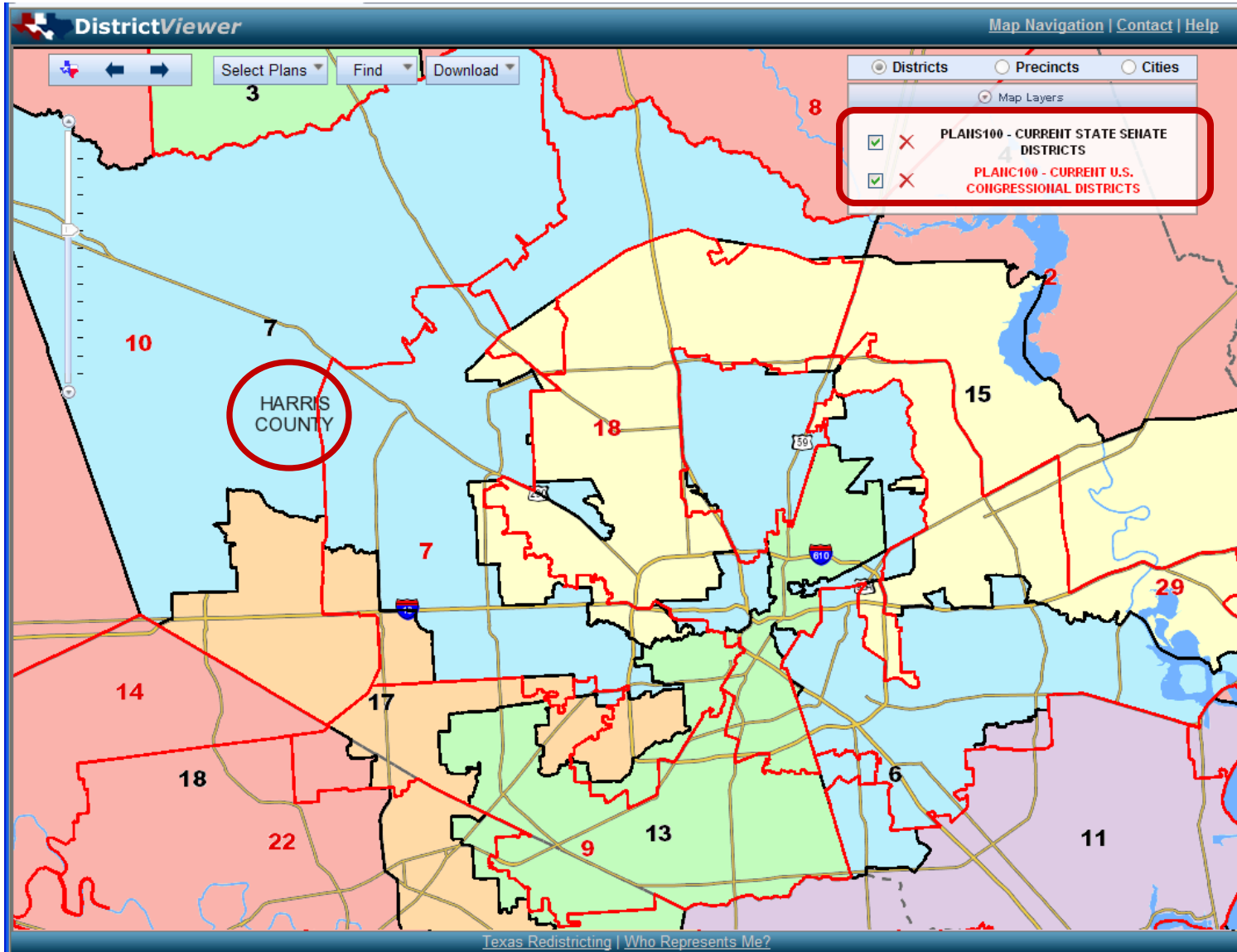
# Senate Plan



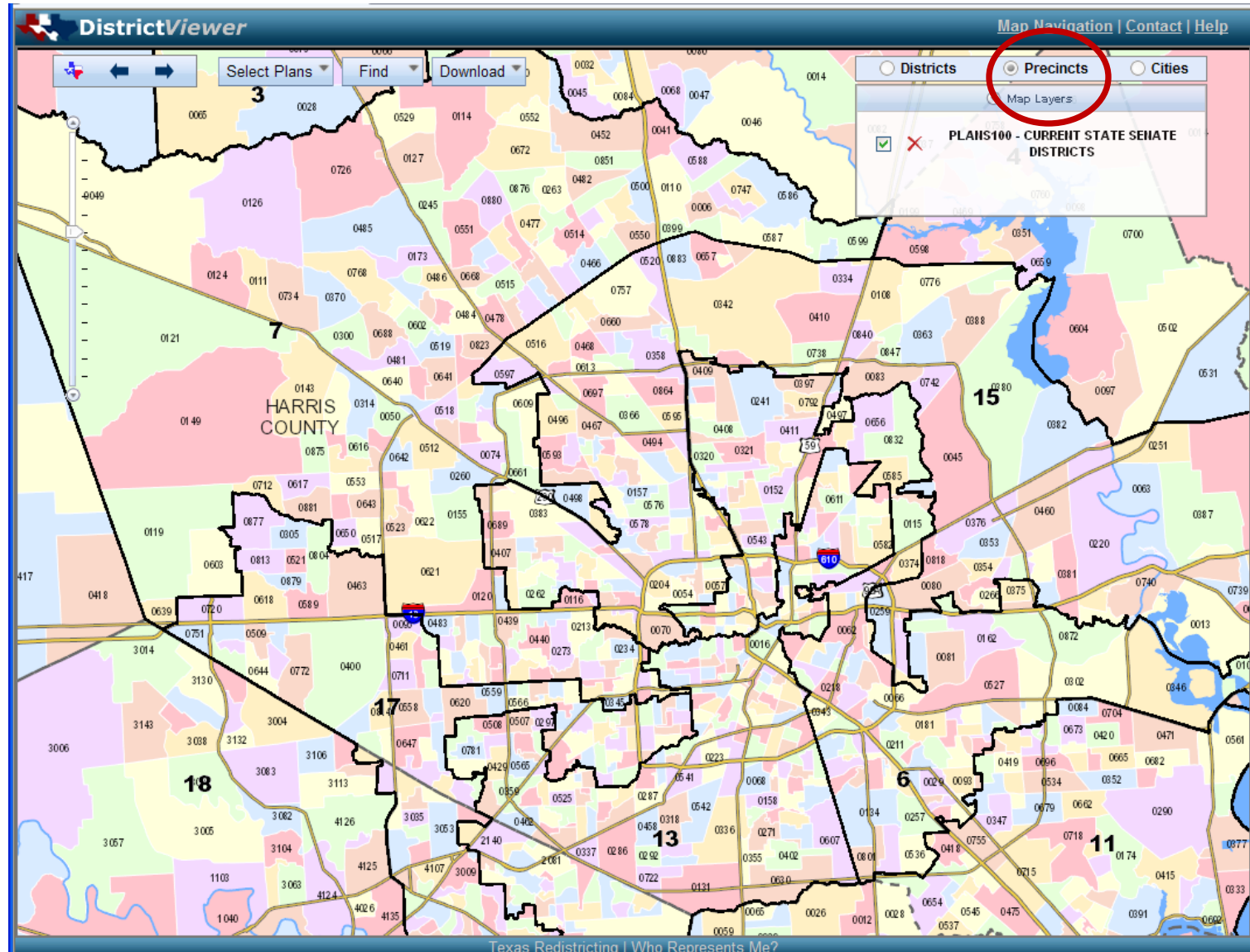
# Senate Plan in color with Congressional Plan in red lines



# Senate Plan with Congressional Plan Harris County detail

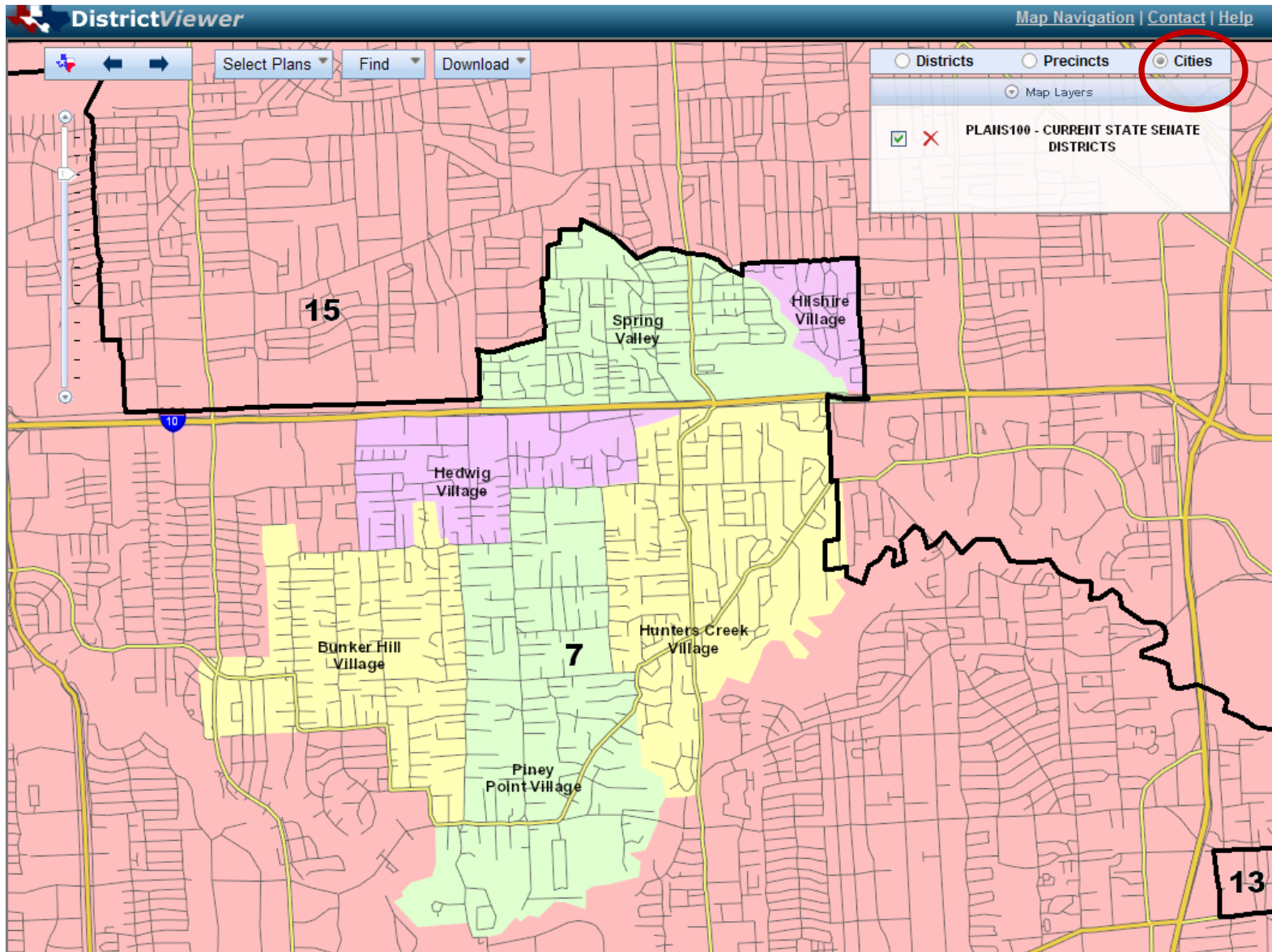


# Senate Plan, Harris County with Precincts





# Senate Plan with cities



# Find an Address - with Streets

The screenshot displays the DistrictViewer interface. At the top left, the logo "DistrictViewer" is visible. To its right are navigation links: "Map Navigation | Contact | Help". Below the logo is a search bar with a dropdown menu. The dropdown menu is open, showing options: "Find", "District", "Precinct", "County", "City", and "Address". The "Find" option is highlighted. A red box highlights the entire search menu area. In the top right corner, there are radio buttons for "Districts", "Precincts", and "Cities", with "Districts" selected. Below these are "Map Layers" and a legend for "PLANS100 - CURRENT STATE SENATE DISTRICTS". The main map area shows a grid of streets in Austin, Texas. A popup window is centered on the map, displaying the address "1200 N. Congress Avenue", "Austin", "78701", and a blue link "Who Represents Me?". A red box highlights this popup. The map shows district boundaries for 14 and 25. The Red River is visible at the bottom left.

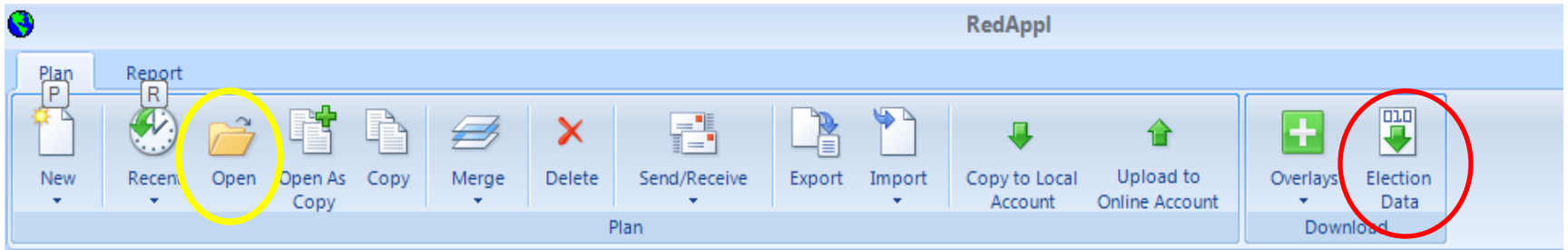


# Applications - RedAppl

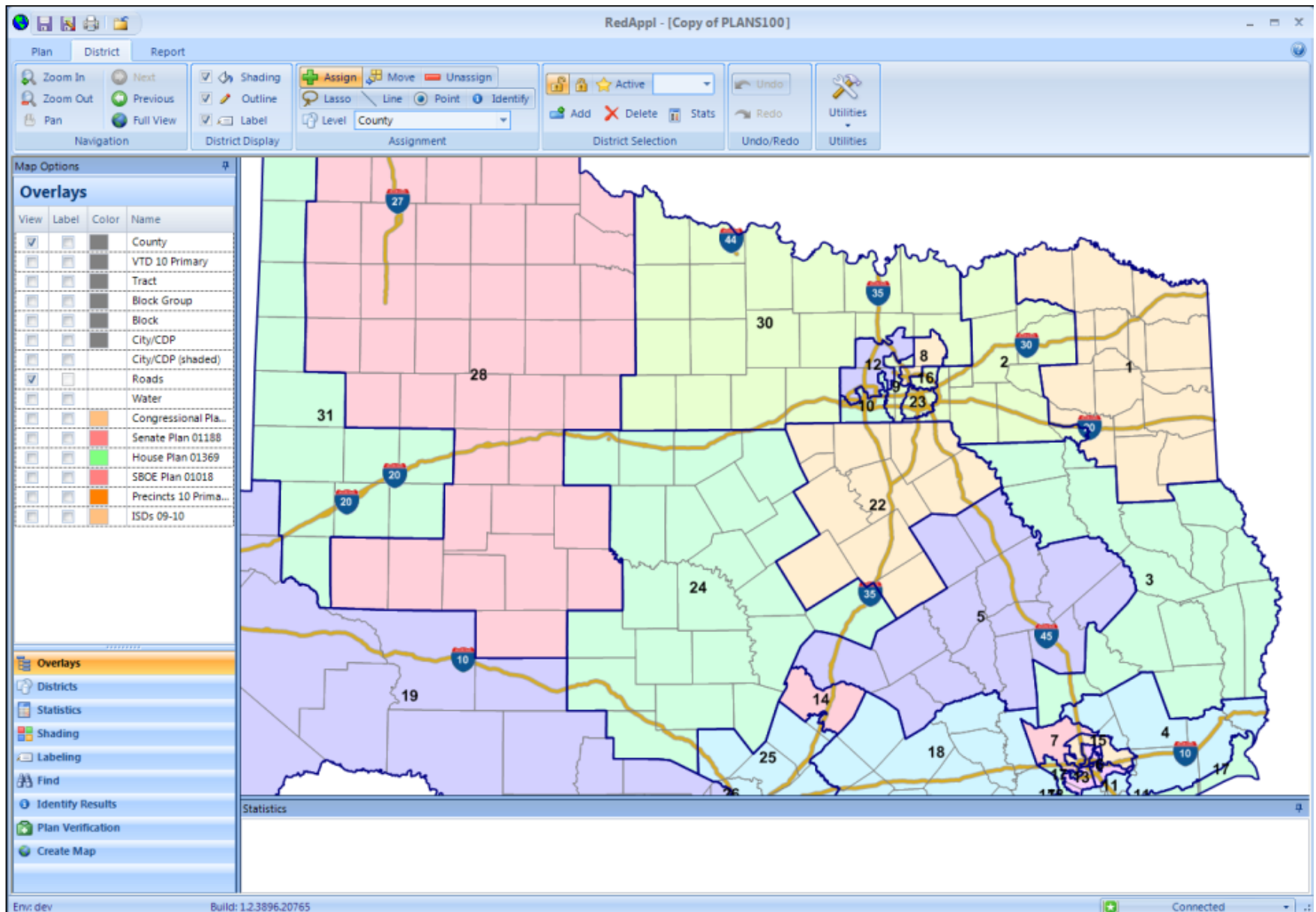
## Redistricting Application

- ⦿ district modeling application
- ⦿ significant increase in the amount of data it can process – access to past five election cycles
- ⦿ capability to work off-line on council laptops  
(note: must first connect laptop at capitol)
- ⦿ can link to Google Earth
- ⦿ can model by city as well as VTDs and census geography (counties, tracts, blocks)
- ⦿ available in capitol offices September 8, 2010 for practice with current data and geography  
(note: practice plans will not be able to be converted to new geography next spring)

# RedAppl plan screen

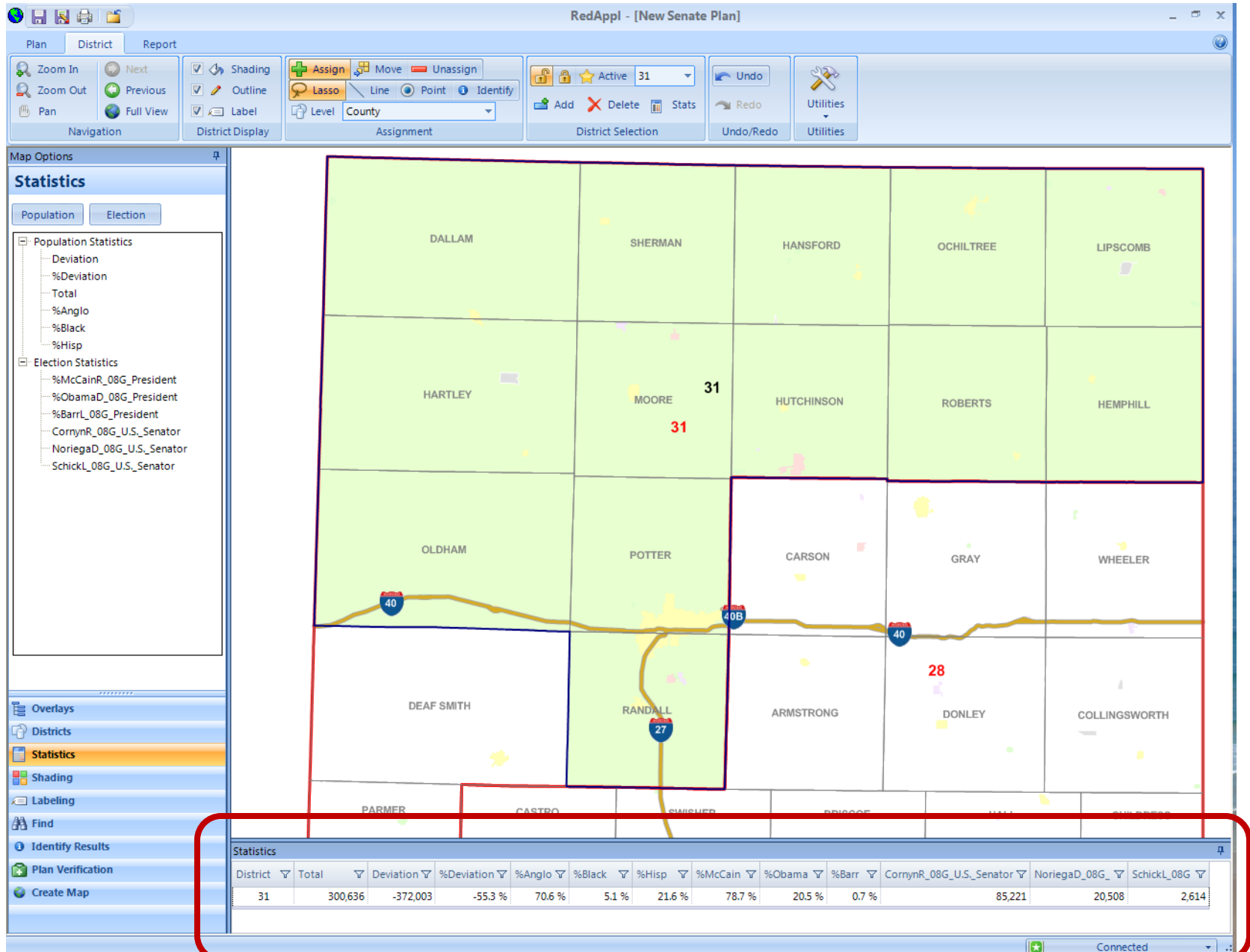


# Copy of Current Senate Plan – North Texas

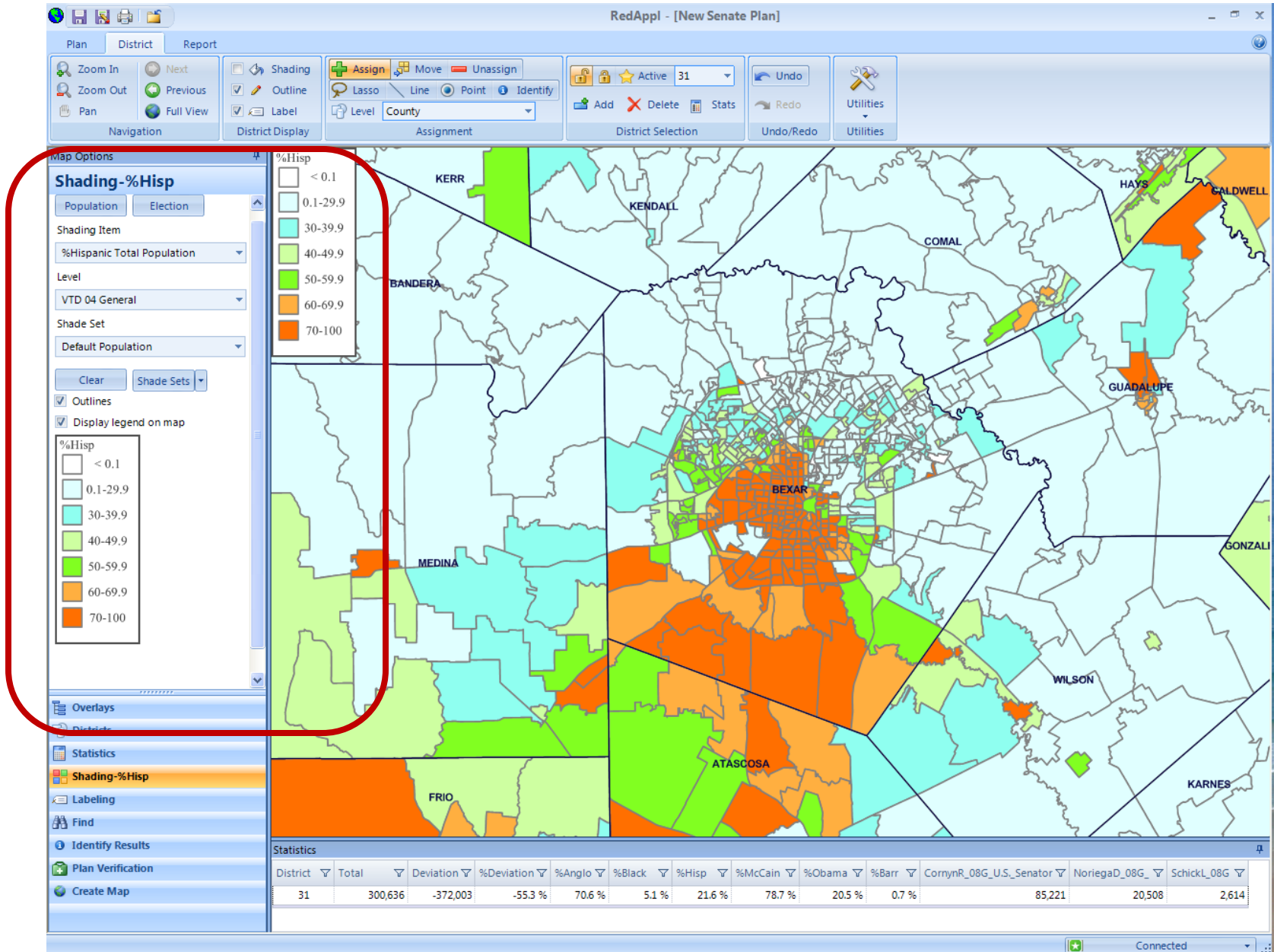




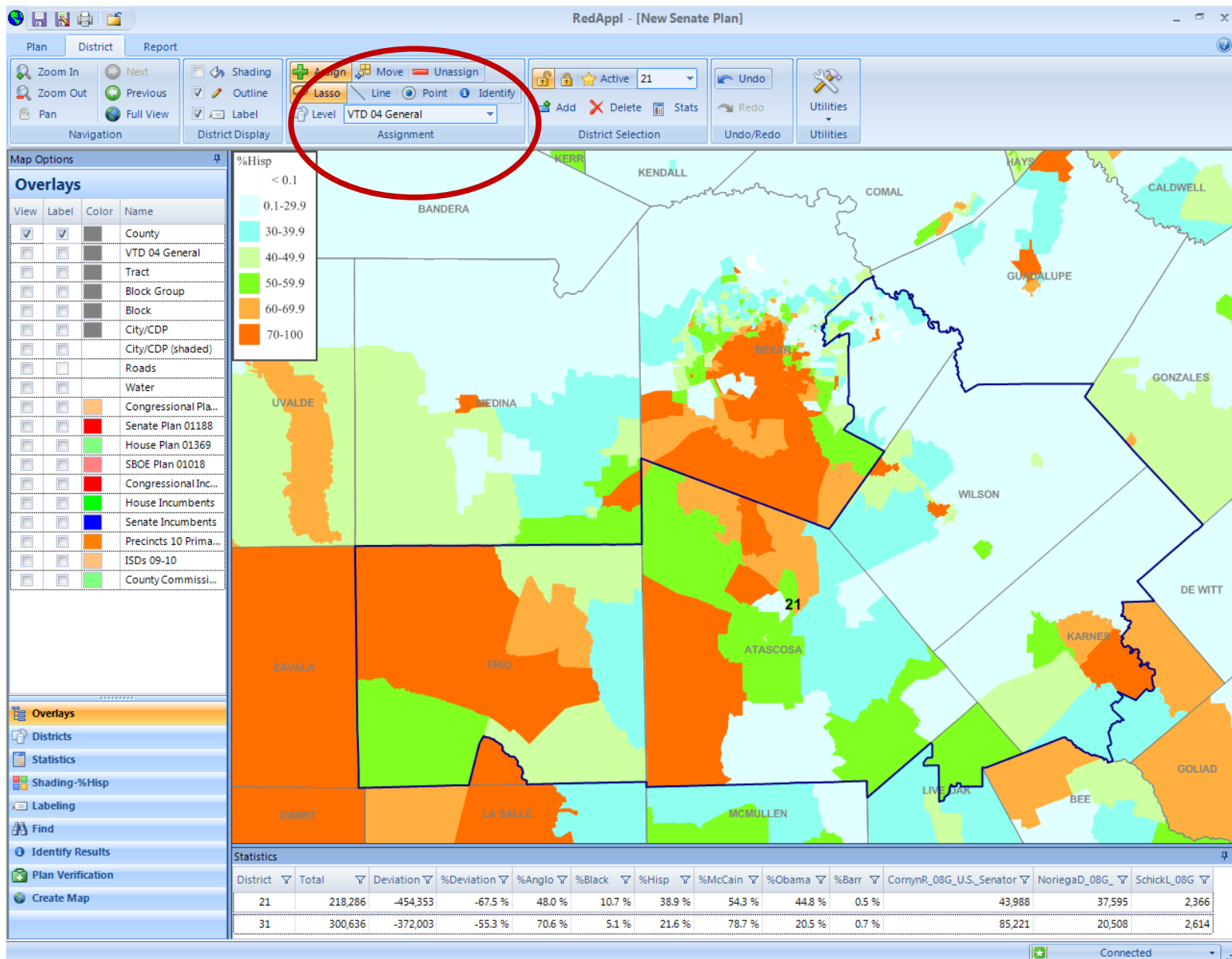
# Selected counties from SD 31 with some stats



# Bexar County w/ % Hispanic Population by VTD

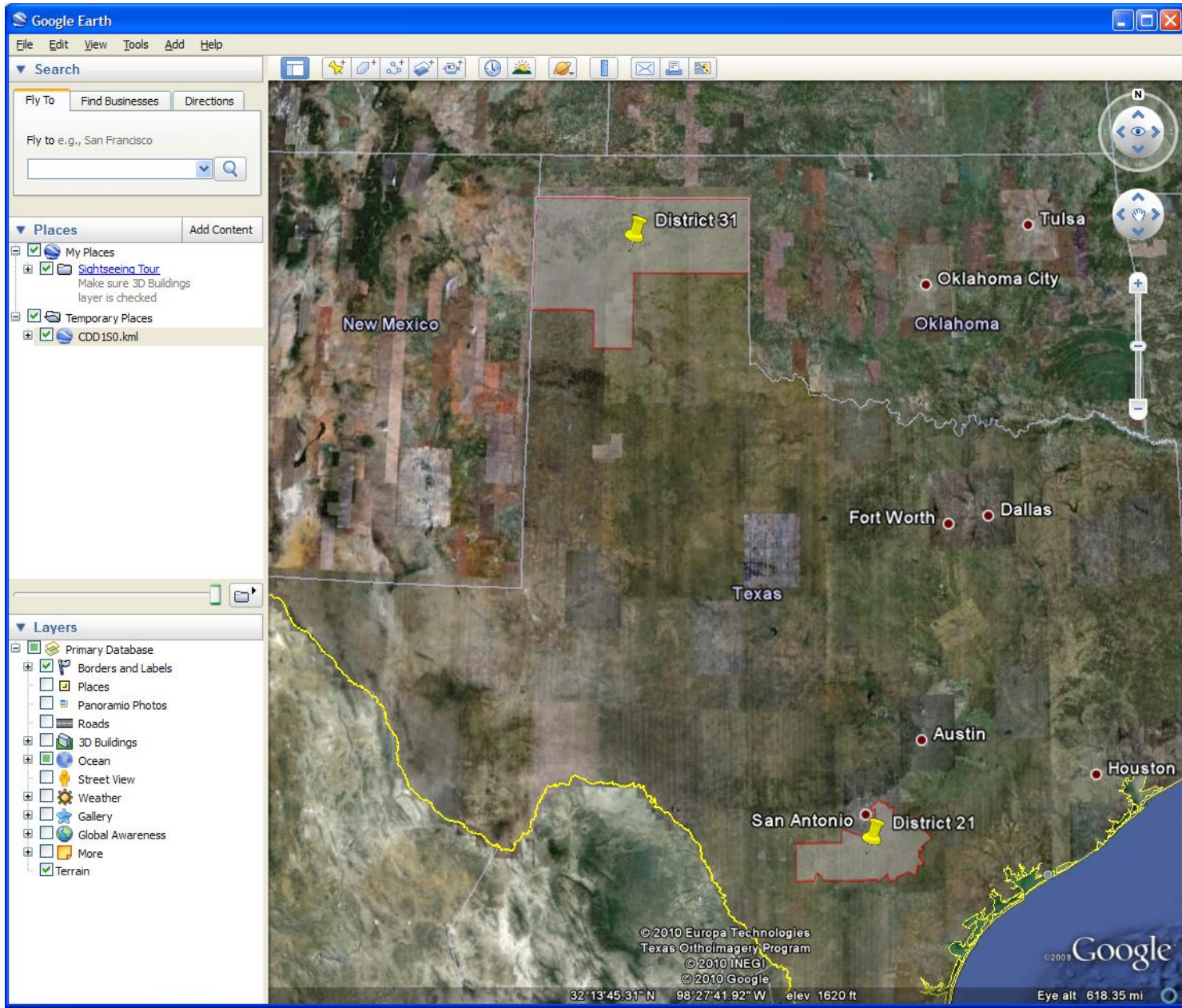


# Part of SD 21 drawn by VTD





# Two districts with Google Earth





# Reports – Population Information: One Person One Vote

Red-100  
Data: 2000 Census  
PLANS100 07/24/2001 7:29:33 PM

## District Population Analysis with County Subtotals SENATE DISTRICTS - PLANS100

Texas Legislative Council  
08/27/10 6:09 PM  
Page 1 of 6

Total State Population	20,851,820
Total Districts Required	31
Ideal District Population	672,639
Unassigned Population	0
Districts in Plan	31

	<b>Population</b>	<b>-----Deviation-----</b>	
		<b>Total</b>	<b>Percent</b>
Plan Overall Range		65,350	9.71%
Smallest District (21)	639,525	-33,114	-4.92%
Largest District (10)	704,875	32,236	4.79%
Average (mean)	672,639	17,500	2.60%

PLANS100

# Detailed County Population Data

## also by VTD (census precinct) level

Red-100  
Data: 2000 Census  
PLANS100 07/24/2001 7:29:33 PM

### District Population Analysis with County Subtotals

Texas Legislative Council  
08/27/10 6:09 PM  
Page 2 of 6

### SENATE DISTRICTS - PLANS100

	Deviation		Total	Anglo	Black	Hisp	B+H	Other	%A	%B	%H	%BH	%O
<b>DISTRICT 1</b>	3,040	Total:	675,679	501,017	118,077	46,846	164,054	10,608	74.2	17.5	6.9	24.3	1.6
	0.45 %	VAP:	502,668	385,484	81,459	28,461	109,451	7,733	76.7	16.2	5.7	21.8	1.5
Bowie (100%)			89,306	62,712	21,235	3,992	25,071	1,523	70.2	23.8	4.5	28.1	1.7
Camp (100%)			11,549	7,507	2,247	1,707	3,935	107	65.0	19.5	14.8	34.1	0.9
Cass (100%)			30,438	23,542	6,028	526	6,529	367	77.3	19.8	1.7	21.5	1.2
Franklin (100%)			9,458	8,129	387	842	1,220	109	85.9	4.1	8.9	12.9	1.2
Gregg (100%)			111,379	76,851	22,575	10,183	32,584	1,944	69.0	20.3	9.1	29.3	1.7
Harrison (100%)			62,110	43,044	15,085	3,316	18,326	740	69.3	24.3	5.3	29.5	1.2
Lamar (100%)			48,499	39,116	6,720	1,614	8,277	1,106	80.7	13.9	3.3	17.1	2.3
Marion (100%)			10,941	7,818	2,671	263	2,912	211	71.5	24.4	2.4	26.6	1.9
Morris (100%)			13,048	9,217	3,182	477	3,643	188	70.6	24.4	3.7	27.9	1.4
Panola (100%)			22,756	17,629	4,084	798	4,866	261	77.5	17.9	3.5	21.4	1.1
Red River (100%)			14,314	10,868	2,586	669	3,241	205	75.9	18.1	4.7	22.6	1.4
Rusk (100%)			47,372	33,737	9,232	3,998	13,153	482	71.2	19.5	8.4	27.8	1.0
Smith (60%)			104,348	82,489	12,947	7,005	19,848	2,011	79.1	12.4	6.7	19.0	1.9
Titus (100%)			28,118	16,782	3,082	7,960	10,982	354	59.7	11.0	28.3	39.1	1.3
Upshur (100%)			35,291	29,728	3,687	1,394	5,048	515	84.2	10.4	4.0	14.3	1.5
Wood (100%)			36,752	31,848	2,329	2,102	4,419	485	86.7	6.3	5.7	12.0	1.3
<b>DISTRICT 2</b>	21,683	Total:	694,322	478,412	92,706	102,340	193,744	22,166	68.9	13.4	14.7	27.9	3.2
	3.22 %	VAP:	490,177	354,413	59,541	61,434	120,362	15,402	72.3	12.1	12.5	24.6	3.1
Dallas (15%)			337,847	209,005	50,988	63,105	113,220	15,622	61.9	15.1	18.7	33.5	4.6
Delta (100%)			5,327	4,616	467	165	625	86	86.7	8.8	3.1	11.7	1.6
Fannin (100%)			31,242	26,298	2,559	1,753	4,297	647	84.2	8.2	5.6	13.8	2.1
Hopkins (100%)			31,960	25,946	2,620	2,967	5,548	466	81.2	8.2	9.3	17.4	1.5
Hunt (100%)			76,596	61,170	7,557	6,366	13,813	1,613	79.9	9.9	8.3	18.0	2.1
Kaufman (100%)			71,313	54,424	7,764	7,925	15,624	1,265	76.3	10.9	11.1	21.9	1.8
Rains (100%)			9,139	8,183	281	505	781	175	89.5	3.1	5.5	8.5	1.9
Rockwall (100%)			43,080	35,817	1,471	4,771	6,210	1,053	83.1	3.4	11.1	14.4	2.4
Smith (23%)			39,678	10,334	17,494	11,582	28,956	388	26.0	44.1	29.2	73.0	1.0
Van Zandt (100%)			48,140	42,619	1,505	3,201	4,670	851	88.5	3.1	6.6	9.7	1.8
<b>DISTRICT 3</b>	28,645	Total:	701,284	531,252	91,116	60,360	150,575	10,457	75.8	13.0	9.0	23.8	1.5

# Population and Election Summary by District

Red-200  
Data: 2000 Census  
PLANS100 07/24/2001 7:29:33 PM

Texas Legislative Council  
08/27/10 6:09 PM  
Page 1 of 2

## Population and Voter Data SENATE DISTRICTS - PLANS100

District	Deviation		Population										Voter Registration			Turnout		
			Total	Anglo	Black	Hisp	B+H	Other	%A	%B	%H	%BH	%O	General Election	Total	SSVR	Total	TO/VR
1	3,040 0.45%	Total:	675,679	501,017	118,077	46,846	164,054	10,608	74.2	17.5	6.9	24.3	1.6	2008	394,070	2.9 %	279,193	70.8 %
		VAP:	502,668	385,484	81,459	28,461	109,451	7,733	76.7	16.2	5.7	21.8	1.5		2006	385,263	2.6 %	164,035
2	21,683 3.22%	Total:	694,322	478,412	92,706	102,340	193,744	22,166	68.9	13.4	14.7	27.9	3.2	2008	399,825	8.6 %	282,813	70.7 %
		VAP:	490,177	354,413	59,541	61,434	120,362	15,402	72.3	12.1	12.5	24.6	3.1		2006	372,072	7.6 %	151,839
3	28,645 4.26%	Total:	701,284	531,252	91,116	69,369	159,575	10,457	75.8	13.0	9.9	22.8	1.5	2008	422,721	4.6 %	292,272	69.1 %
		VAP:	521,768	406,717	64,274	43,600	107,368	7,683	77.9	12.3	8.4	20.6	1.5		2006	401,743	4.1 %	176,047
4	-16,772 -2.49%	Total:	655,867	494,123	88,444	57,120	144,633	17,111	75.3	13.5	8.7	22.1	2.6	2008	408,126	6.2 %	287,404	70.4 %
		VAP:	471,848	363,114	60,669	36,724	96,850	11,884	77.0	12.9	7.8	20.5	2.5		2006	390,931	5.6 %	158,398
5	-7,425 -1.10%	Total:	665,214	458,549	82,081	104,862	185,566	21,099	68.9	12.3	15.8	27.9	3.2	2008	425,444	9.9 %	315,510	74.2 %
		VAP:	495,709	355,073	57,362	68,222	124,930	15,706	71.6	11.6	13.8	25.2	3.2		2006	380,010	9.1 %	178,779
6	-32,754 -4.87%	Total:	639,885	474,656	63,579	451,363	512,164	13,065	17.9	9.9	70.5	80.0	2.0	2008	208,401	54.9 %	107,457	51.6 %
		VAP:	429,481	316,202	42,027	283,928	324,450	9,829	22.2	9.8	66.1	75.5	2.3		2006	202,092	53.3 %	51,780
7	22,471 3.34%	Total:	695,110	486,961	47,730	113,173	159,455	48,694	70.1	6.9	16.3	22.9	7.0	2008	457,462	11.6 %	349,978	76.5 %
		VAP:	503,413	363,818	31,397	74,106	104,716	34,879	72.3	6.2	14.7	20.8	6.9		2006	413,846	10.3 %	175,274
8	4,470 0.66%	Total:	677,109	474,601	40,721	96,954	136,462	66,046	70.1	6.0	14.3	20.2	9.8	2008	440,658	6.9 %	356,184	80.8 %
		VAP:	499,748	360,346	27,739	64,598	91,738	47,664	72.1	5.6	12.9	18.4	9.5		2006	377,818	6.3 %	176,978
9	10,730 1.60%	Total:	683,369	379,083	84,504	166,628	248,971	55,315	55.5	12.4	24.4	36.4	8.1	2008	327,757	13.7 %	244,059	74.5 %
		VAP:	484,497	285,972	54,391	105,523	158,934	39,591	59.0	11.2	21.8	32.8	8.2		2006	296,953	12.9 %	117,374
10	32,236 4.79%	Total:	704,875	399,005	117,630	161,733	277,371	28,499	56.6	16.7	22.9	39.4	4.0	2008	396,788	12.1 %	304,399	76.7 %
		VAP:	504,808	306,396	78,342	100,682	178,034	20,378	60.7	15.5	19.9	35.3	4.0		2006	369,619	11.6 %	163,519
11	-2,264 -0.34%	Total:	670,375	438,871	64,375	134,957	197,768	33,736	65.5	9.6	20.1	29.5	5.0	2008	409,089	15.0 %	286,424	70.0 %
		VAP:	483,941	329,874	44,158	86,654	130,099	23,968	68.2	9.1	17.9	26.9	5.0		2006	387,871	14.3 %	159,982
12	-5,286 -0.79%	Total:	667,353	509,070	39,950	86,478	125,379	32,904	76.3	6.0	13.0	18.8	4.9	2008	471,247	8.7 %	363,779	77.2 %
		VAP:	482,056	378,766	26,129	54,801	80,428	22,862	78.6	5.4	11.4	16.7	4.7		2006	419,338	8.0 %	177,070
13	-6,379 -0.95%	Total:	666,260	133,437	325,507	160,680	482,113	50,710	20.0	48.9	24.1	72.4	7.6	2008	338,037	10.9 %	230,653	68.2 %
		VAP:	483,895	115,962	226,786	103,901	328,346	39,587	24.0	46.9	21.5	67.9	8.2		2006	306,949	10.2 %	111,314
14	27,217 4.05%	Total:	699,856	380,654	75,121	203,673	275,844	43,358	54.4	10.7	29.1	39.4	6.2	2008	430,684	15.4 %	326,186	75.7 %
		VAP:	533,967	311,808	51,434	137,421	187,364	34,795	58.4	9.6	25.7	35.1	6.5		2006	381,197	15.5 %	184,536
15	-6,295 -0.94%	Total:	666,344	225,273	173,164	234,554	404,687	36,384	33.8	26.0	35.2	60.7	5.5	2008	308,037	20.7 %	204,090	66.3 %
		VAP:	468,078	179,993	114,117	148,584	261,209	26,876	38.5	24.4	31.7	55.8	5.7		2006	281,277	19.3 %	93,016
16	3,125 0.46%	Total:	675,764	360,899	85,529	186,648	270,317	44,548	53.4	12.7	27.6	40.0	6.6	2008	296,047	9.9 %	228,616	77.2 %
		VAP:	508,682	293,933	58,316	124,066	181,334	33,415	57.8	11.5	24.4	35.6	6.6		2006	275,763	9.2 %	141,100
17	29,937 4.45%	Total:	702,576	355,334	107,244	159,171	263,733	83,509	50.6	15.3	22.7	37.5	11.9	2008	382,021	13.1 %	270,990	70.9 %
		VAP:	503,583	268,652	71,691	104,483	174,683	60,248	53.3	14.2	20.7	34.7	12.0		2006	352,741	12.2 %	146,874
18	-11,597 -1.72%	Total:	661,042	386,786	73,311	182,102	253,452	20,804	58.5	11.1	27.5	38.3	3.1	2008	433,236	18.7 %	300,909	69.5 %
		VAP:	473,776	294,144	50,724	115,680	165,569	14,063	62.1	10.7	24.4	34.9	3.0		2006	406,472	16.6 %	175,434
19	-32,776 -4.87%	Total:	639,863	162,382	42,132	428,554	468,168	9,313	25.4	6.6	67.0	73.2	1.5	2008	339,138	56.6 %	196,744	58.0 %
		VAP:	438,510	128,891	29,868	274,140	302,848	6,771	29.4	6.8	62.5	69.1	1.5		2006	323,001	57.2 %	110,292
20	4,140 0.62%	Total:	676,779	163,775	17,231	486,661	502,002	11,002	24.2	2.5	71.9	74.2	1.6	2008	343,419	64.3 %	194,433	56.6 %
		VAP:	462,963	129,634	11,424	314,844	325,415	7,914	28.0	2.5	68.0	70.3	1.7		2006	333,591	63.5 %	104,945

Texas Legislative Council reports prior to 2008 generally do not include results for third party, independent, or write-in candidates. Beginning in 2008, results for all third-party and independent candidates are included, and the results for write-in candidates are summed and included as "write-in". Complete official results for all years are maintained by the office of the secretary of state.  
SSVR = Spanish surname voter registration

# Voter Registration and Turnout by District

Red-206  
Data: 2000 Census  
PLANS100 07/24/2001 7:29:33 PM

## Election Analysis SENATE DISTRICTS - PLANS100 2008 General Election

District	Voter Registration		Turnout	
	Total	SSVR	Total	TO/VR
<b>STATE</b>	<b>11,694,736</b>	<b>21.8 %</b>	<b>8,108,358</b>	<b>69.3 %</b>
1	394,070	2.9 %	279,193	70.8 %
2	399,825	8.6 %	282,813	70.7 %
3	422,721	4.6 %	292,272	69.1 %
4	408,126	6.2 %	287,404	70.4 %
5	425,444	9.9 %	315,510	74.2 %
6	208,401	54.9 %	107,457	51.6 %
7	457,462	11.6 %	349,978	76.5 %
8	440,658	6.9 %	356,184	80.8 %
9	327,757	13.7 %	244,059	74.5 %
10	396,789	12.1 %	304,399	76.7 %
11	409,089	15.0 %	286,424	70.0 %
12	471,247	8.7 %	363,779	77.2 %
13	338,037	10.9 %	230,653	68.2 %
14	430,684	15.4 %	326,186	75.7 %
15	308,037	20.7 %	204,090	66.3 %
16	296,047	9.9 %	228,616	77.2 %
17	382,021	13.1 %	270,990	70.9 %
18	433,236	18.7 %	300,909	69.5 %
19	339,138	56.6 %	196,744	58.0 %
20	343,419	64.2 %	194,433	56.6 %
21	356,652	61.0 %	196,631	55.1 %
22	391,262	9.0 %	271,494	69.4 %
23	324,130	18.5 %	217,473	67.1 %
24	390,004	10.5 %	279,988	71.8 %
25	533,761	19.3 %	413,708	77.5 %
26	318,427	57.5 %	201,928	63.4 %
27	299,517	79.1 %	147,282	49.2 %
28	358,785	23.7 %	245,227	68.3 %
29	327,817	68.8 %	179,123	54.6 %
30	425,491	5.9 %	304,123	71.5 %
31	336,682	22.0 %	229,288	68.1 %

Texas Legislative Council reports prior to 2008 generally do not include results for third party, independent, or write-in candidates. Beginning in 2008, results for all third-party and independent candidates or write-in candidates are summed and included as "write-in". Complete official results for all years are maintained by the office of the secretary of state.  
SSVR = Spanish surnames voter registration



# 2008 Election Results

Red-206  
Data: 2000 Census  
PLANS100 07/24/2001 7:29:33 PM

Texas Legislative Council  
08/27/10 6:10 PM  
Page 2 of 7

## Election Analysis SENATE DISTRICTS - PLANS100 2008 General Election

PRESIDENT

U.S. SENATOR

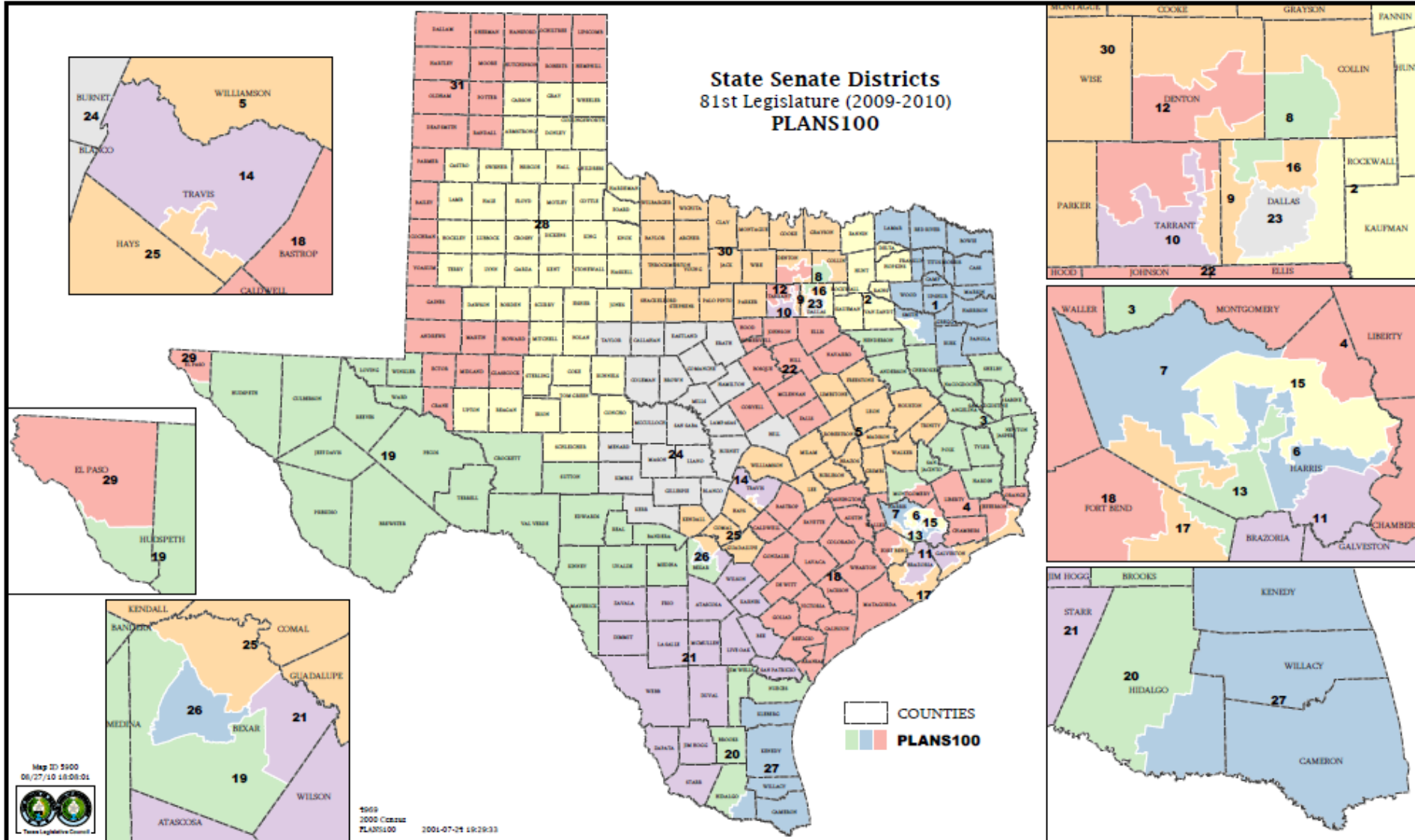
RAILROAD COMMISSIONER 3

District	McCain-R		Obama-D		Barr-L		Write-In-W		Cornyn-R		Noriega-D		Schick-L		Williams-R		Thompson-D		Floyd-L	
STATE	4,479,038	55.4 %	3,528,518	43.6 %	56,091	0.7 %	21,627	0.3 %	4,336,883	54.8 %	3,389,189	42.8 %	185,211	2.3 %	3,998,582	52.1 %	3,406,063	44.4 %	270,033	3.5 %
1	196,426	70.6 %	79,806	28.7 %	1,583	0.6 %	464	0.2 %	187,891	69.2 %	79,397	29.2 %	4,384	1.6 %	164,111	62.4 %	91,529	34.8 %	7,410	2.8 %
2	168,886	59.9 %	110,316	39.1 %	1,774	0.6 %	855	0.3 %	161,718	58.5 %	109,063	39.5 %	5,649	2.0 %	146,640	54.8 %	111,959	41.8 %	9,028	3.4 %
3	211,351	72.4 %	78,121	26.8 %	1,917	0.7 %	560	0.2 %	198,968	69.7 %	81,247	28.5 %	5,311	1.9 %	176,127	63.7 %	92,069	33.3 %	8,159	3.0 %
4	197,706	68.8 %	87,035	30.3 %	1,844	0.6 %	804	0.3 %	188,385	66.9 %	87,593	31.1 %	5,515	2.0 %	173,008	63.1 %	93,278	34.0 %	7,742	2.8 %
5	189,725	60.4 %	119,694	38.1 %	3,250	1.0 %	1,501	0.5 %	189,167	61.7 %	107,720	35.2 %	9,538	3.1 %	169,622	57.3 %	112,565	38.0 %	13,914	4.7 %
6	37,629	35.0 %	68,924	64.2 %	723	0.7 %	157	0.1 %	29,930	28.3 %	73,904	69.9 %	1,867	1.8 %	30,505	29.7 %	69,621	67.7 %	2,747	2.7 %
7	228,100	65.2 %	119,250	34.1 %	2,037	0.6 %	590	0.2 %	222,692	64.6 %	115,050	33.4 %	6,979	2.0 %	216,775	64.7 %	109,621	32.7 %	8,516	2.5 %
8	210,473	59.1 %	141,208	39.7 %	2,603	0.7 %	1,591	0.4 %	211,997	61.6 %	124,085	36.0 %	8,280	2.4 %	198,265	60.1 %	119,137	36.1 %	12,504	3.8 %
9	125,995	51.9 %	114,616	47.2 %	1,525	0.6 %	635	0.3 %	125,129	52.6 %	107,145	45.1 %	5,550	2.3 %	117,179	50.7 %	105,586	45.7 %	8,364	3.6 %
10	158,680	52.1 %	143,351	47.1 %	1,895	0.6 %	462	0.2 %	155,980	52.1 %	137,745	46.0 %	5,837	1.9 %	147,177	50.4 %	136,447	46.8 %	8,208	2.8 %
11	178,974	62.8 %	103,541	36.3 %	2,007	0.7 %	524	0.2 %	166,726	59.6 %	106,756	38.1 %	6,418	2.3 %	157,497	58.1 %	104,809	38.7 %	8,732	3.2 %
12	231,690	63.9 %	127,704	35.2 %	2,615	0.7 %	654	0.2 %	228,259	64.0 %	119,425	33.5 %	9,028	2.5 %	214,243	61.9 %	119,194	34.4 %	12,812	3.7 %
13	45,301	19.6 %	184,065	79.8 %	975	0.4 %	276	0.1 %	44,770	19.7 %	178,463	78.6 %	3,681	1.6 %	44,882	20.2 %	173,396	77.9 %	4,284	1.9 %
14	112,238	34.4 %	208,490	63.9 %	3,997	1.2 %	1,459	0.4 %	119,299	37.3 %	187,720	58.6 %	13,126	4.1 %	111,767	36.0 %	179,068	57.7 %	19,314	6.2 %
15	77,717	38.1 %	125,026	61.3 %	1,066	0.5 %	274	0.1 %	72,930	36.3 %	124,209	61.9 %	3,631	1.8 %	70,996	36.1 %	121,254	61.7 %	4,362	2.2 %
16	117,737	51.7 %	107,355	47.1 %	1,650	0.7 %	978	0.4 %	121,558	54.6 %	96,199	43.2 %	4,872	2.2 %	113,648	53.1 %	92,698	43.3 %	7,642	3.6 %
17	141,052	52.1 %	127,522	47.1 %	1,663	0.6 %	497	0.2 %	136,244	51.7 %	121,615	46.2 %	5,572	2.1 %	130,085	50.8 %	118,793	46.4 %	6,975	2.7 %
18	189,041	63.0 %	108,432	36.1 %	1,832	0.6 %	927	0.3 %	182,102	61.8 %	106,472	36.1 %	6,077	2.1 %	165,179	57.8 %	111,826	39.1 %	8,928	3.1 %
19	87,425	44.5 %	107,165	54.6 %	1,362	0.7 %	494	0.3 %	80,284	42.2 %	105,188	55.3 %	4,596	2.4 %	73,118	39.6 %	104,398	56.6 %	6,917	3.8 %
20	83,021	43.5 %	106,133	55.6 %	1,248	0.7 %	350	0.2 %	75,506	40.6 %	106,276	57.1 %	4,321	2.3 %	69,443	38.4 %	104,903	58.0 %	6,396	3.5 %
21	86,703	44.2 %	108,042	55.1 %	976	0.5 %	377	0.2 %	77,305	40.5 %	109,456	57.3 %	4,208	2.2 %	70,269	38.0 %	107,372	58.0 %	7,324	4.0 %
22	184,495	68.1 %	83,971	31.0 %	1,864	0.7 %	394	0.1 %	177,576	66.5 %	83,447	31.3 %	5,816	2.2 %	159,229	61.5 %	90,781	35.1 %	8,939	3.5 %
23	40,453	18.7 %	174,778	80.7 %	811	0.4 %	512	0.2 %	40,599	19.2 %	168,053	79.3 %	3,303	1.6 %	38,558	18.5 %	165,516	79.3 %	4,557	2.2 %
24	190,252	68.3 %	85,396	30.6 %	2,113	0.8 %	883	0.3 %	187,723	68.7 %	78,634	28.8 %	6,956	2.5 %	167,661	63.3 %	86,613	32.7 %	10,500	4.0 %
25	236,839	57.3 %	171,352	41.4 %	3,557	0.9 %	1,721	0.4 %	235,529	58.2 %	155,909	38.5 %	13,219	3.3 %	220,562	56.3 %	152,228	38.9 %	18,868	4.8 %
26	77,838	38.5 %	121,646	60.2 %	1,532	0.8 %	906	0.4 %	71,572	36.4 %	118,986	60.6 %	5,929	3.0 %	67,262	35.2 %	116,086	60.7 %	7,970	4.2 %
27	47,197	32.2 %	97,746	66.8 %	879	0.6 %	567	0.4 %	42,486	30.0 %	96,259	67.9 %	3,066	2.2 %	38,387	28.1 %	92,753	67.8 %	5,702	4.2 %
28	173,671	71.4 %	67,540	27.8 %	1,724	0.7 %	340	0.1 %	171,065	72.1 %	60,945	25.7 %	5,222	2.2 %	150,184	65.4 %	71,051	30.9 %	8,411	3.7 %
29	60,425	33.7 %	116,913	65.3 %	1,119	0.6 %	666	0.4 %	55,509	32.0 %	113,352	65.3 %	4,703	2.7 %	51,103	30.5 %	109,297	65.2 %	7,245	4.3 %

Texas Legislative Council reports prior to 2008 generally do not include results for third party, independent, or write-in candidates. Beginning in 2008, results for all third-party and independent candidates are included, and the results for write-in candidates are summed and included as "write-in". Complete official results for all years are maintained by the office of the secretary of state.  
SSVR = Spanish surname voter registration

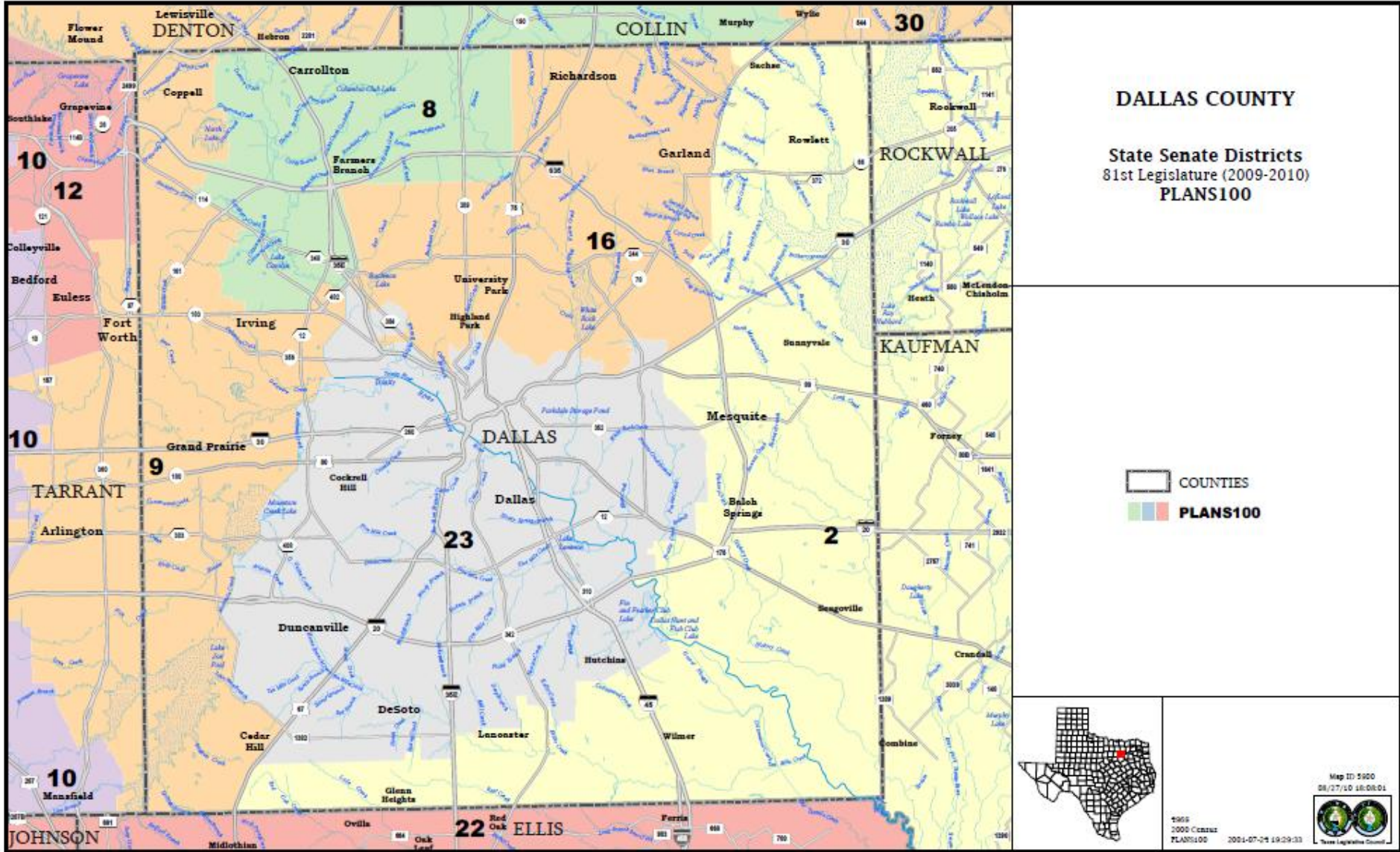
# Maps

## Statewide Plan Packet Map





# Dallas County Plan Packet Map



## DALLAS COUNTY

State Senate Districts  
81st Legislature (2009-2010)  
**PLANS100**

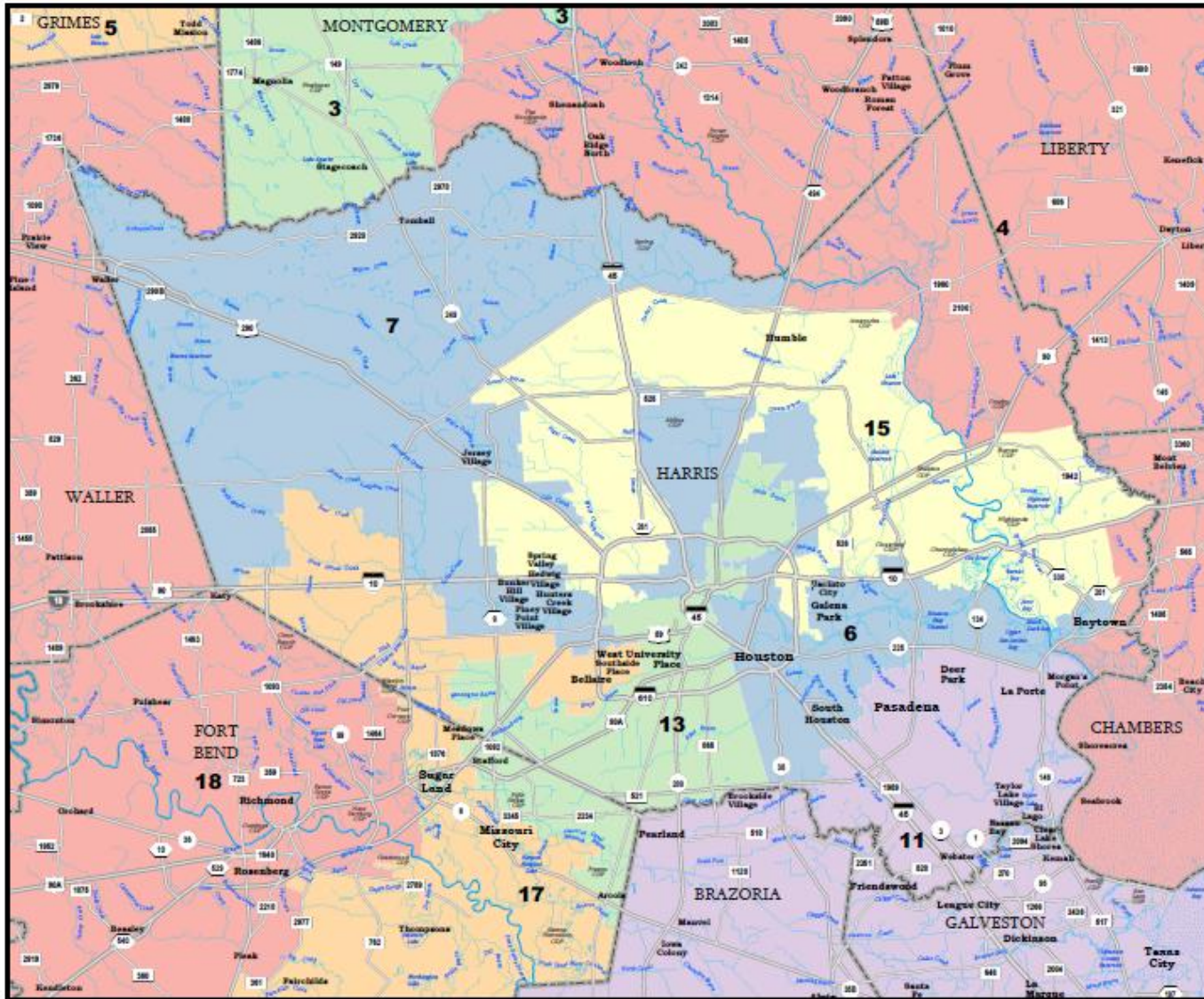

 COUNTIES  
 PLANS100



Map ID: 5000  
 08/27/10 10:08:01  
 1995  
 2005 Contact  
 PLANS100  
 2001-07-24 19:29:33  
 Texas Legislative Council



# Harris County Plan Packet Map

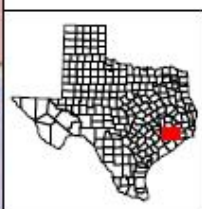


**HARRIS COUNTY**

State Senate Districts  
81st Legislature (2009-2010)  
**PLANS100**

Legend:

- COUNTIES (represented by a black outline)
- PLANS100 (represented by colored squares: green, red, purple, blue, orange, yellow, light blue, light green)



Map ID: 5100  
08/27/10 10:00:01

4:00  
2009 Census  
PLANS100 2004-07-24 19:29:33  
Texas Legislative Council

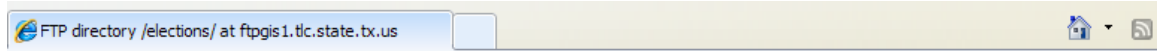


# Geographic, Election, and Plan Data

FTP site – data available to legislators and public

- ⦿ Geographic: current plans, precincts, VTDs, school districts, census tracts, block groups, and blocks, and ZIP Codes by district
- ⦿ Election – returns and registered voters, Spanish surname registered voters, and turnout from 1998 to 2008 (will update with 2010 primary/run-off in September)
- ⦿ DistrictViewer – links to FTP site with population and election reports, geographic shapefiles, and block equivalency files of current and proposed public plans

# Example of Election Data available on FTP Site



## FTP directory /elections/ at ftpgis1.tlc.state.tx.us

To view this FTP site in Windows Explorer, click **Page**, and then click **Open FTP Site in Windows Explorer**.

[Up to higher level directory](#)

05/23/2008 11:18AM	7,726,792	<a href="#">1998 Democratic Primary Election Returns.csv</a>
05/23/2008 11:13AM	677,984	<a href="#">1998 Democratic Primary Election VRT0.csv</a>
05/23/2008 11:14AM	278,690	<a href="#">1998 Democratic Runoff Election Returns.csv</a>
05/23/2008 11:14AM	118,380	<a href="#">1998 Democratic Runoff Election VRT0.csv</a>
05/23/2008 11:17AM	27,110,774	<a href="#">1998 General Election Returns.csv</a>
05/23/2008 11:16AM	697,564	<a href="#">1998 General Election VRT0.csv</a>
05/23/2008 11:14AM	30,726,694	<a href="#">1998 Republican Primary Election Returns.csv</a>
05/23/2008 11:13AM	676,028	<a href="#">1998 Republican Primary Election VRT0.csv</a>
05/23/2008 11:16AM	5,912,726	<a href="#">1998 Republican Runoff Election Returns.csv</a>
05/23/2008 11:13AM	666,164	<a href="#">1998 Republican Runoff Election VRT0.csv</a>
05/23/2008 11:24AM	6,825,486	<a href="#">2000 Democratic Primary Election Returns.csv</a>
05/23/2008 11:18AM	681,318	<a href="#">2000 Democratic Primary Election VRT0.csv</a>
05/23/2008 11:20AM	1,477,812	<a href="#">2000 Democratic Runoff Election Returns.csv</a>
05/23/2008 11:19AM	667,140	<a href="#">2000 Democratic Runoff Election VRT0.csv</a>
05/23/2008 11:23AM	9,461,770	<a href="#">2000 General Election Returns.csv</a>
05/23/2008 11:23AM	716,988	<a href="#">2000 General Election VRT0.csv</a>
05/23/2008 11:44AM	26,518,824	<a href="#">2000 Republican Primary Election Returns.csv</a>
05/23/2008 11:16AM	680,112	<a href="#">2000 Republican Primary Election VRT0.csv</a>
05/23/2008 11:24AM	6,241,616	<a href="#">2000 Republican Runoff Election Returns.csv</a>
05/23/2008 11:21AM	659,628	<a href="#">2000 Republican Runoff Election VRT0.csv</a>
05/23/2008 11:30AM	15,734,302	<a href="#">2002 Democratic Primary Election Returns.csv</a>
05/23/2008 11:26AM	685,758	<a href="#">2002 Democratic Primary Election VRT0.csv</a>
05/23/2008 11:29AM	1,680,418	<a href="#">2002 Democratic Runoff Election Returns.csv</a>
05/23/2008 11:28AM	680,754	<a href="#">2002 Democratic Runoff Election VRT0.csv</a>
06/26/2008 01:12PM	33,722,150	<a href="#">2002 General Election Returns.csv</a>
05/23/2008 11:30AM	705,706	<a href="#">2002 General Election VRT0.csv</a>
05/23/2008 11:26AM	26,957,120	<a href="#">2002 Republican Primary Election Returns.csv</a>
05/23/2008 11:25AM	680,880	<a href="#">2002 Republican Primary Election VRT0.csv</a>
05/23/2008 11:31AM	8,211,748	<a href="#">2002 Republican Runoff Election Returns.csv</a>
05/23/2008 11:27AM	672,730	<a href="#">2002 Republican Runoff Election VRT0.csv</a>
05/23/2008 11:40AM	7,974,034	<a href="#">2004 Democratic Primary Election Returns.csv</a>
05/23/2008 11:34AM	684,744	<a href="#">2004 Democratic Primary Election VRT0.csv</a>
05/23/2008 11:33AM	60,532	<a href="#">2004 Democratic Runoff Election Returns.csv</a>
05/23/2008 11:34AM	27,868	<a href="#">2004 Democratic Runoff Election VRT0.csv</a>
05/23/2008 11:37AM	14,482,974	<a href="#">2004 General Election Returns.csv</a>
05/23/2008 11:36AM	723,062	<a href="#">2004 General Election VRT0.csv</a>
05/23/2008 11:33AM	14,075,980	<a href="#">2004 Republican Primary Election Returns.csv</a>
05/23/2008 11:32AM	681,056	<a href="#">2004 Republican Primary Election VRT0.csv</a>
05/23/2008 11:36AM	2,274,662	<a href="#">2004 Republican Runoff Election Returns.csv</a>
05/23/2008 11:34AM	672,492	<a href="#">2004 Republican Runoff Election VRT0.csv</a>
05/23/2008 11:46AM	9,305,388	<a href="#">2006 Democratic Primary Election Returns.csv</a>
05/23/2008 11:40AM	682,276	<a href="#">2006 Democratic Primary Election VRT0.csv</a>
05/23/2008 11:43AM	3,144,046	<a href="#">2006 Democratic Runoff Election Returns.csv</a>

Questions?

Redistricting Support Line  
(512)463-6622